



**Electrically operated stainless steel ball valve RX® fig. 3182HMF/ER**  
two-piece, full bore with flange connection

two-piece stainless steel ball valve in EN 558 overall length with full bore and flange connection and electric actuator

<b>Ball valve</b>	: fig. 3182HMF
<b>Material body</b>	: stainless steel, GX5CrNiMo19-11-2 (1.4408)
<b>Connecting piece</b>	: stainless steel, GX5CrNiMo19-11-2 (1.4408)
<b>Ball</b>	: stainless steel, GX5CrNiMo19-11-2 (1.4408)
<b>Spindle</b>	: stainless steel, X5CrNiMo17-12-2 (1.4401)
<b>Bolts/nuts/circlips</b>	: stainless steel, X5CrNi18-10 (1.4301)
<b>Seats</b>	: 15% RPTFE (glass fibre reinforced PTFE)
<b>Material spindle gaskets</b>	: 15% RPTFE (glass fibre reinforced PTFE)
<b>O-ring</b>	: FPM
<b>Body seal</b>	: PTFE
<b>Connection</b>	: flanges, according to EN1092-1 - DN15 up to DN50: PN40 - from DN65: PN16 (note: DN65: 4 holes)
<b>Overall length</b>	: according to EN 558 Gr27
<b>Construction</b>	: two-piece cast body with full bore and flange connection
<b>Operating pressure</b>	: - up to DN50; max. 40 bar (PN40)* - from DN65; max. 16 bar (PN16)*
<b>Temperature</b>	: -30 °C to +230 °C
<b>Actuator</b>	: RX® type ER.00
<b>Supply voltage</b>	: DC and AC as required; see Table 2
<b>Running time</b>	: 90° travel time; see Table 2
<b>Material body</b>	: nylon GF6.6
<b>Material cover</b>	: ABS
<b>Material screws</b>	: stainless steel
<b>Control</b>	: - open/closed, relay - 3-points modulating
<b>Limit switches</b>	: micro switches, 250V AC, 5A; - x 2 for motor connections - x 2 suitable for position feedback
<b>Duty cycle</b>	: 50%
<b>Temperature range</b>	: -10 °C to +55 °C
<b>Enclosure protection</b>	: IP65
<b>Position indicator</b>	: removable plastic position indicator on continuous drive shaft
<b>Manual override</b>	: on continuous drive shaft; - ER10-20; T grip (provided) - ER35-60-100; with adjustable spanner (not provided)

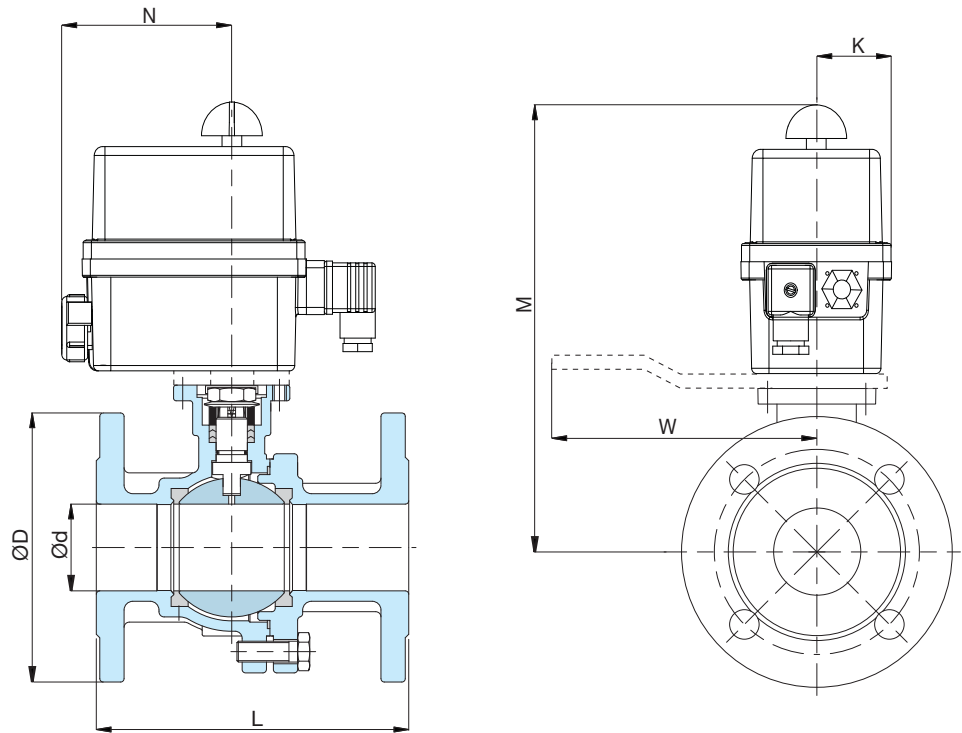
\* The selection of the actuator is based on a maximum differential pressure of 10 bar!

All ball valves and actuators in accordance with PED 97/23/EC

The information provided in this document is for general information purposes only and does not constitute advice. ERIKS shall not be liable for any damages resulting from the use of this document, including but not limited to damages caused by any incorrectness or incompleteness of the provided information, unless such damage is the result of any willful misconduct or gross negligence on part of ERIKS.

For more information, a quotation or an order please contact one of our specialists on number +31 (072) 514 18 00

ERIKS bv • P.O. box 280 • 1800 BK Alkmaar • phone (072) 514 15 14 • fax (072) 515 56 45 • info@eriks.nl • www.eriks.nl



**Tabel 1: Dimensions fig. 3182HMF/ER; maximum operating pressure 10 bar**

DN		15	20	25	32	40	50	65	80
PN		40	40	40	40	40	40	16	16
Actuator, type ER		20	20	35	35	35	60	60	100
Ød	mm	15	20	25	32	40	50	65	80
ØD	mm	95	105	115	140	150	165	185	200
L	mm	115	120	125	130	140	150	170	180
K	mm	46	46	64	64	64	64	64	64
N	mm	91	91	97	97	97	97	97	97
M*	mm	202	214	242	249	261	268	288	300
W*	mm	180	180	200	200	200	200	200	200
weight	kg	3.41	4.21	7.28	8.68	11.19	13.19	16.83	21.13

\* Handle, type ERP is optional.

Dimension M with handle, type ERP:

- for ER10-20; + 4 mm

- for ER35-60-100; + 5 mm

**Tabel 2: Electrical data fig. 3182HMF/ER**

DN	Actuator	Control voltage	Power W	Running time s
15/20	ER20	100-240V AC	15	20
		24V AC/DC	15	20
25/32/40	ER35	100-240V AC	15	35
		24V AC/DC	15	35

\* shorter execution on request

The information provided in this document is for general information purposes only and does not constitute advice. ERIKS shall not be liable for any damages resulting from the use of this document, including but not limited to damages caused by any incorrectness or incompleteness of the provided information, unless such damage is the result of any willful misconduct or gross negligence on part of ERIKS.

**For more information, a quotation or an order please contact one of our specialists on number +31 (072) 514 18 00**

ERIKS bv • P.O. box 280 • 1800 BK Alkmaar • phone (072) 514 15 14 • fax (072) 515 56 45 • info@eriks.nl • www.eriks.nl

**Tabel 2: Electrical data fig. 3182HMF/ER**

<i>DN</i>	<i>Actuator</i>	<i>Control voltage</i>	<i>Power</i>	<i>Running time</i>
			<i>W</i>	<i>s</i>
50/65	ER60*	100-240V AC	15	60
		24V AC/DC	15	60
80	ER100*	100-240V AC	15	100
		24V AC/DC	15	100

\* shorter execution on request