



Pneumatic operated stainless steel ball valve RX® fig. 3188HMF/ADA
three-piece, full bore, double-acting

three-piece stainless steel ball valve in DIN-ISO overall length with full bore and female connection or welded connection and double-acting pneumatic actuator

| | |
|-----------------------------------|---|
| Ball valve | : fig. 3188HMF |
| Material body | : stainless steel, GX5CrNiMo19-11-2 (1.4408) |
| Connection piece | : stainless steel, GX5CrNiMo19-11-2 (1.4408) |
| Ball | : stainless steel, GX5CrNiMo19-11-2 (1.4408) |
| Spindle | : stainless steel, X5CrNiMo17-12-2 (1.4401) |
| Bolts/nuts/circlips | : stainless steel, X5CrNi18-10 (1.4301) |
| Seats | : 15% RPTFE (glass fibre reinforced PTFE) |
| Material spindle gaskets | : 15% RPTFE (glass fibre reinforced PTFE) |
| O-ring | : FPM |
| Body seal | : PTFE |
| Connection | : both sides; - BSP female connection as per BS 21 - NPT female connection as per ANSI B2.1 - sleeve weld - butt weld |
| Overall length | : - female connection and sleeve weld as per DIN 3202 M3 - butt weld as per DIN 3202 S13 |
| Construction | : three-piece cast body with full bore ; max. 63 bar (PN63)* ; max. 40 bar (PN40)* |
| Temperature | : -30 °C to +180 °C |
| ATEX 94/9/EC | : EEx II 2 GDcX |
| Actuator | : RX® type ADA |
| Function | : double-acting |
| Material body | : aluminium hard anodised |
| Covers | : aluminium epoxy-coated |
| Cover bolts | : stainless steel A2-70 |
| Position indicator | : Polyamide |
| Max air operating pressure | : 8 bar* |
| Temperature range | : -30 °C to +80 °C |
| ATEX 94/9/EC | : Ex II G D c |

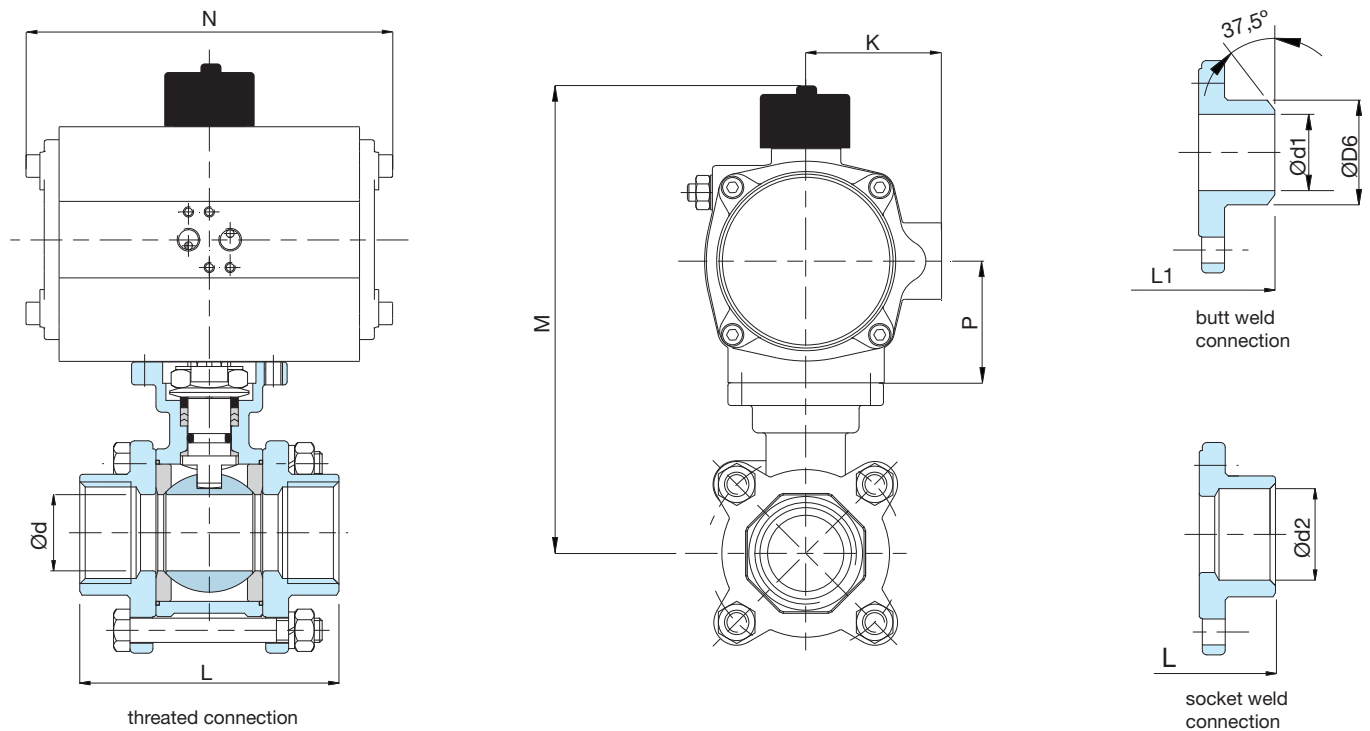
* Selection of the actuator is based on a maximum medium differential pressure of 10 bar and a minimum air operating pressure of 6 bar!

All ball valves and actuators in accordance with PED 97/23/EC

The information provided in this document is for general information purposes only and does not constitute advice. ERIKS shall not be liable for any damages resulting from the use of this document, including but not limited to damages caused by any incorrectness or incompleteness of the provided information, unless such damage is the result of any willful misconduct or gross negligence on part of ERIKS.

For more information, a quotation or an order please contact one of our specialists on number +31 (072) 514 18 00

ERIKS bv • P.O. box 280 • 1800 BK Alkmaar • phone (072) 514 15 14 • fax (072) 515 56 45 • info@eriks.nl • www.eriks.nl



Tabel 1: Dimensions fig. 3188HMF/ADA; maximum operating pressure 10 bar, air operating pressure 6 bar

| BSP | | 1/4" | 3/8" | 1/2" | 3/4" | 1" | 1.1/4" | 1.1/2" | 2" | 2.1/2" | 3" | 4" |
|----------------------------|----|------|------|------|------|------|--------|--------|------|--------|-------|----|
| Actuator, type ADA | | 20 | 20 | 20 | 20 | 20 | 40 | 80 | 80 | 80 | 130 | * |
| Ød (wire and sleeve weld) | mm | 10 | 12.5 | 15 | 20 | 25 | 32 | 38 | 50 | 65 | 78 | |
| L (wire and sleeve weld) | mm | 75 | 75 | 75 | 80 | 90 | 110 | 120 | 140 | 185 | 205 | |
| Ød2 (wire and sleeve weld) | mm | 14.1 | 17.6 | 21.7 | 27.1 | 33.8 | 42.6 | 48.7 | 61.1 | 76.9 | 89.8 | |
| Ød1 (butt weld) | mm | 10 | 12.5 | 16 | 20 | 25 | 33.8 | 39.5 | 50.8 | 62.7 | 77.9 | |
| ØD6 (butt weld) | mm | 17 | 17 | 21.3 | 26.7 | 33.6 | 42.4 | 48 | 60.5 | 76.1 | 88.9 | |
| L1 (butt weld) | mm | 70 | 70 | 75 | 90 | 100 | 110 | 125 | 150 | 190 | 220 | |
| K | mm | 48 | 48 | 48 | 48 | 48 | 56 | 66 | 66 | 66 | 71 | |
| P | mm | 34 | 34 | 34 | 34 | 34 | 45 | 55 | 55 | 55 | 60 | |
| M | mm | 135 | 135 | 135 | 142 | 152 | 175 | 213 | 220 | 245 | 264 | |
| N | mm | 145 | 145 | 145 | 145 | 145 | 158 | 177 | 177 | 177 | 196 | |
| weight | kg | 1.91 | 1.91 | 1.91 | 2.11 | 2.28 | 4.58 | 5.19 | 6.29 | 11.77 | 15.57 | |

* on request

The information provided in this document is for general information purposes only and does not constitute advice. ERIKS shall not be liable for any damages resulting from the use of this document, including but not limited to damages caused by any incorrectness or incompleteness of the provided information, unless such damage is the result of any willful misconduct or gross negligence on part of ERIKS.

For more information, a quotation or an order please contact one of our specialists on number +31 (072) 514 18 00

ERIKS bv • P.O. box 280 • 1800 BK Alkmaar • phone (072) 514 15 14 • fax (072) 515 56 45 • info@eriks.nl • www.eriks.nl